



Description

Range of extruded aluminum joint covers that are suitable for use in a wide range of internal and external applications in commercial, institutional and industrial buildings. While aesthetically pleasing they are particularly useful for protection of elastomeric joint sealants and fire barriers.

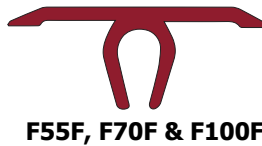
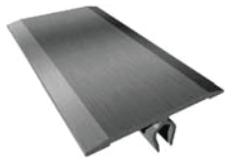
Materials

Anodized aluminium 6063/T6 or mill finish aluminum. Polished finish and powder coated profiles can be provided in a wide range of colors.

Supply Lengths

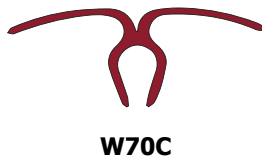
3m or 6m lengths
Custom lengths can be produced to order.

Floor Profiles



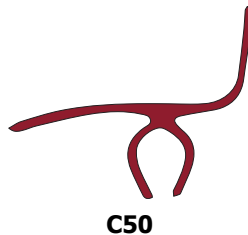
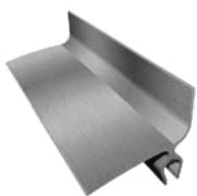
F55F, F70F & F100F

Wall Profiles

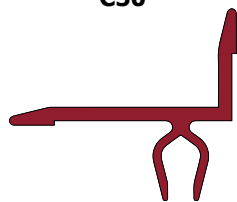
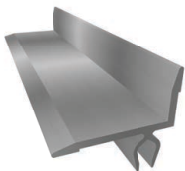


W70C

Corner Profiles

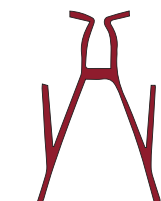


C50

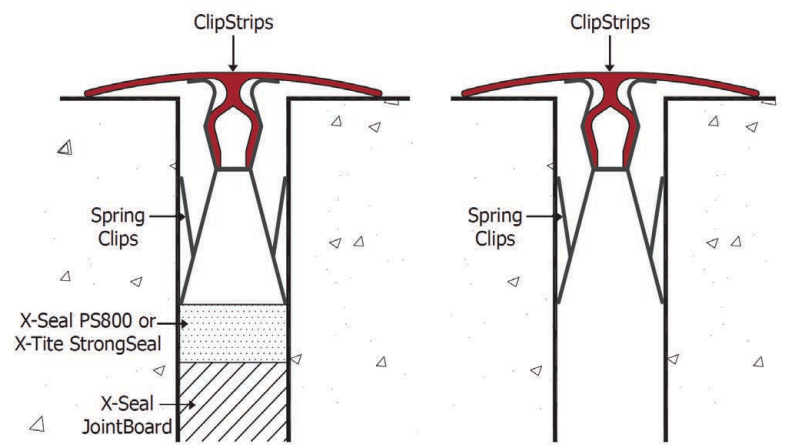


C100

Spring Clips



SS40 and SS60



Profile Type	Profile Width	Joint Width
Floor Profile		
F55F	55	20 to 35
F70F	70	30 to 45
F100F	100	40 to 60
F117F	117	60 to 70
Wall Profile		
W55G	55	25 to 35
W70C	70	15 to 50
Corner Profile		
C50	53	15 to 50
C100	75	50 to 60
Spring Clips		
SS40	40	20 to 30
SS60	60	30 to 50

Dimension in mm