

The Complete Car Park Solutions



Car Park System Selector



X-CALLIBUR[®]
TECHNICAL FLOORING

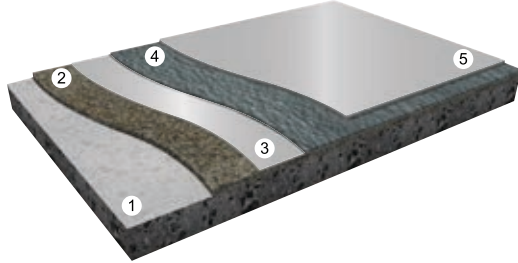
**LEED® VOC
Compliant**

X-Tech Car Park Solutions



Epoxy

X-Tech EpoxySeal FLR100 System

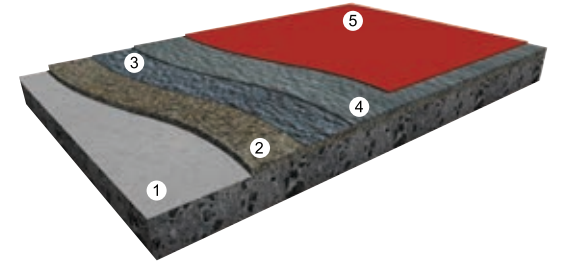


Typical System

1. X-Prime SF (100 microns) or X-Prime MT (150 microns)
2. X-Tech Primer Filler ⁽¹⁾ (0.3 to 0.5L/m²)
3. X-Tech EpoxySeal FLR100 (200 to 300 microns)
4. X-Tech AntiSlip Grains (1 to 2kg/m²)
5. X-Tech EpoxySeal FLR100 (200 to 300 microns) or X-Tech UraSeal FLR100 ⁽²⁾ (200 to 300 microns)

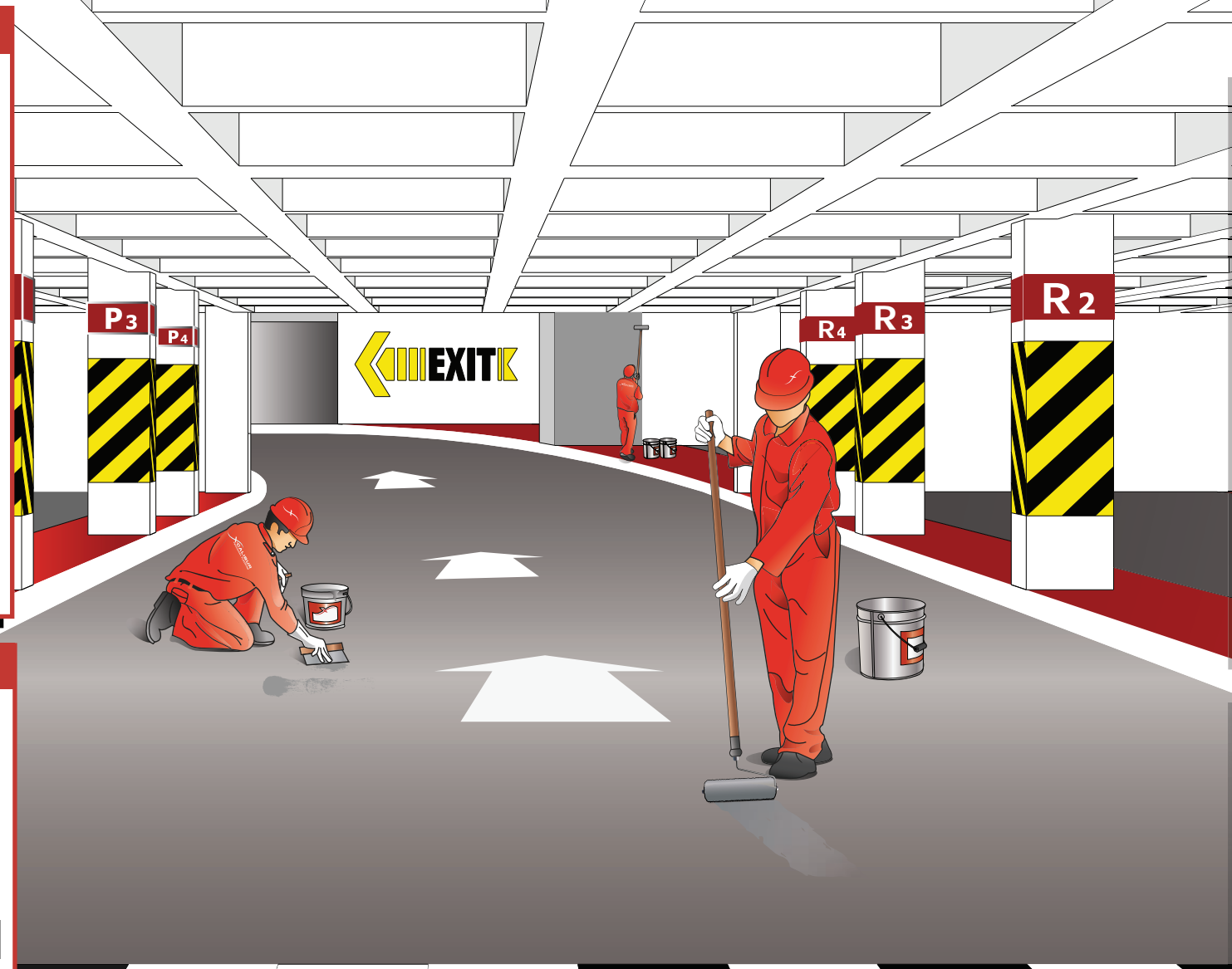
Polyurethane

X-Tech DeckCoat CP System

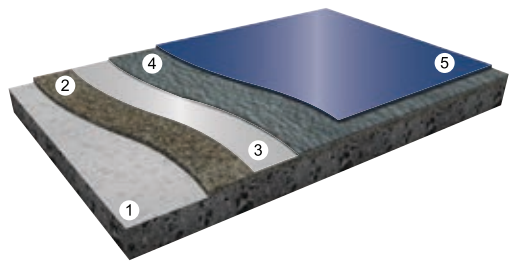


Typical System

1. X-Prime SF (100 microns) or X-Prime MT (150 microns)
2. X-Tech Primer Filler ⁽¹⁾ (0.3 to 0.5L/m²)
3. X-Tech AntiSkid Coat (150 to 200 microns)
4. X-Tech AntiSlip Grains (1 to 2kg/m²)
5. X-Tech DeckCoat CP TopCoat (200 to 300 microns)



Fast Track System



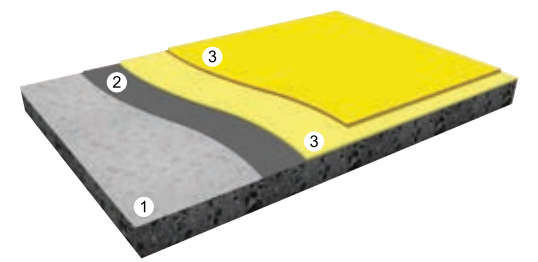
Typical System

1. X-Prime SF (100 microns)
2. X-Tech Primer Filler ⁽¹⁾ - Fast Cure Grade (0.3 to 0.5L/m²)
3. X-Tech EpoxySeal FLR100 (200 to 300 microns)
4. X-Tech AntiSlip Grains (1 to 2kg/m²)
5. X-Shield EpoxySeal AR100 (200 to 300 microns)

Notes:

- ⁽¹⁾ Depending on concrete quality above primers can be omitted and X-Tech Primer Filler used on its own.
- ⁽²⁾ Use X-Tech UraSeal FLR100 if maximum UV resistance required.
- On ramps repeat steps 3 and 4.
- Thickness where indicated are wet film (WFT).

Anti-carbonation Coating



Typical System

1. X-Shield Primer AR (35 microns)
2. X-Shield FillCoat (To fill imperfections)
3. X-Shield AntiCarb S (2 coats of 125 microns each)

Accessories

- X-Tech Speed Breakers
- X-Tech Column Guards
- X-Tech Wall Guards
- X-Tech Wheel Stoppers



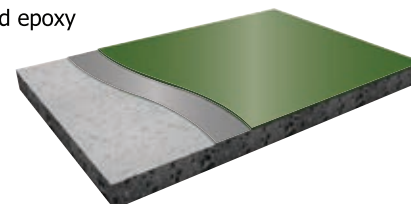
Expansion Joints

- **X-Joint FHD**
Heavy duty extruded anodized aluminium joint covers for floors.
- **X-Joint WCP**
Extruded anodized aluminum joint covers for walls and ceilings.



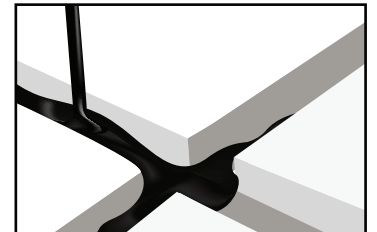
Walkway and Staircases

- **X-Tech EpoxySeal WDE**
Water dispersed epoxy floor coating.



Joint Sealants

- **X-Seal PS800**
Polysulphide sealant Available in gun and pouring grade.
- **X-Seal FR200**
High performance fuel resistant joint sealant



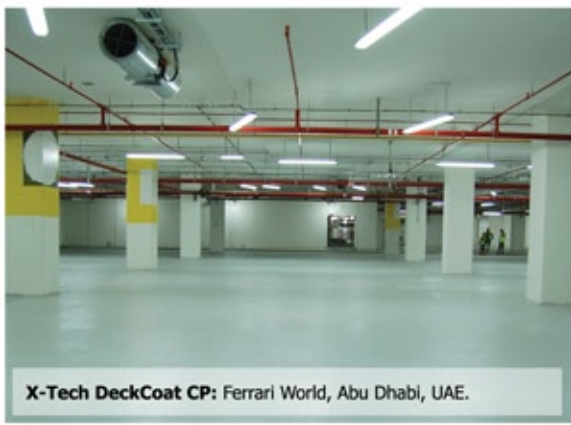
Selected Projects



X-Tech EpoxySeal FLR100: Shoreline Apartments (Habool, Anbara, Sarrood and Hallawi), Palm Jumeirah, Dubai, UAE.



X-Tech EpoxySeal FLR100: MSW Performance Workshop, Dubai, UAE.



X-Tech DeckCoat CP: Ferrari World, Abu Dhabi, UAE.



X-Tech EpoxySeal AR100: Fisher Island, Miami, Florida, USA.

Standard Car Park Color Range



RAL 7035
Light Grey



RAL 7001
Silver Grey



RAL 7042
Traffic Grey A



RAL 6017
May Green



RAL 1013
Oyster White



RAL 3016
Coral Red



RAL 1003
Signal Yellow



RAL 5017
Traffic Blue

Every effort is made to reproduce these RAL sample colors as faithfully as possible. However, due to reproduction limitations, it is necessary that we reserve the right of reasonable variation. Color will vary due to differences in surface texture, lightning and methods of application.